

PALMERA
3100-8142
8141-3300
2019-04/1

D MONTAGEANLEITUNG
BEDIENUNGSANLEITUNG

NL HANDLEIDING VOOR DE MONTAGE
GEBRUIKSAANWIJZING

TR MONTAJ TALIMATI
KULLANIM KLAVUZU

RO INSTRUCȚIUNI DE INSTALARE
INSTRUCȚIUNI DE UTILIZARE

FR NOTICE DE MONTAGE
MANUEL INSTRUCTIONS

HU KÖZGYŰLÉS UTASÍTÁSOK
KEZELÉSI UTASÍTÁS

SI NAVODILA ZA MONTAŽO
NAVODILA ZA UPORABO

ES INSTRUCCIONES DE MONTAJE
MANUAL DEL USUARIO

GB ASSEMBLY INSTRUCTIONS
INSTRUCTION MANUAL

PL INSTRUKCJA MONTAŻU
INSTRUKCJA OBSŁUGI

RU ИНСТРУКЦИЯ ПО МОНТАЖУ
ИНСТРУКЦИЯ ПО ЭКСПЛУАТАЦИИ

IT ISTRUZIONI DI MONTAGGIO
MANUALE DI ISTRUZIONI

SK MONTÁŽNY NÁVOD
NÁVOD NA POUŽITIE

CZ MONTÁŽNÍ NÁVOD
NÁVOD K POUŽITÍ

PT INSTRUÇÕES DE MONTAGEM
MANUAL DO USUÁRIO

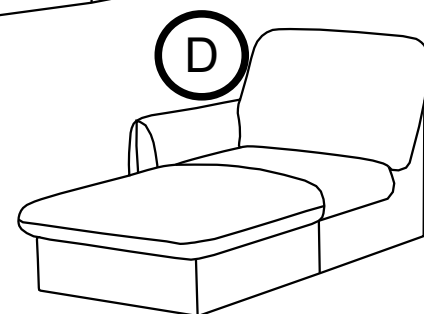
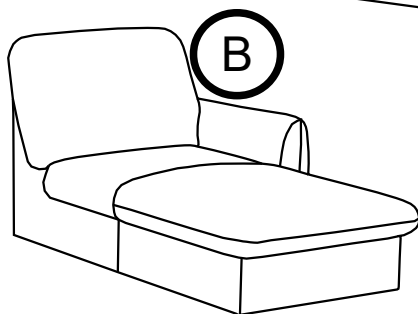
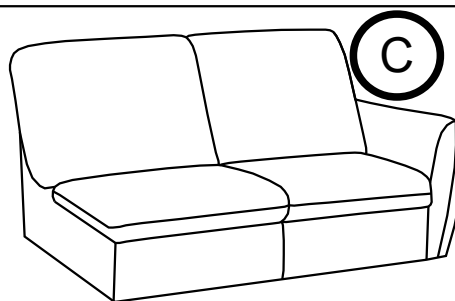
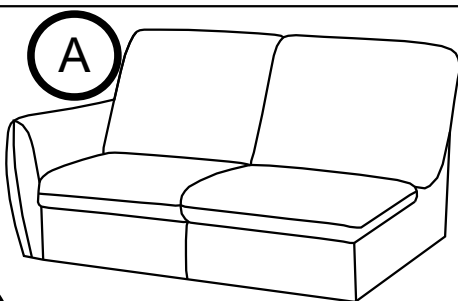
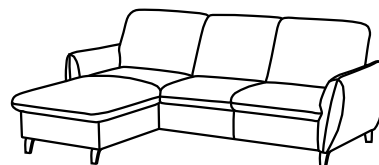
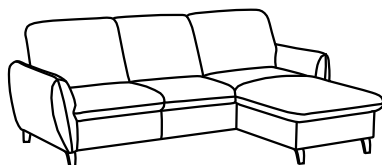
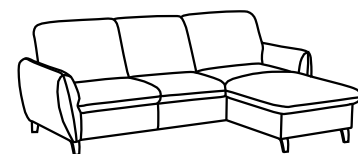
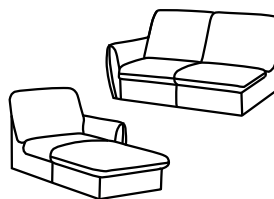
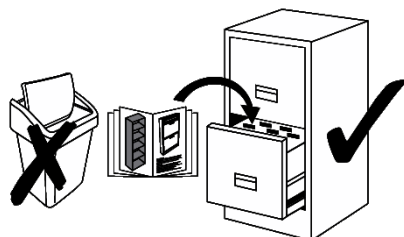
HR UPUTE ZA MONTAŽU
UPUTE ZA UPOTREBU

Name · Naam · Nazwa · Ísim · Название · Nume · Nome · Názov · Názov ·
 Název · Neve

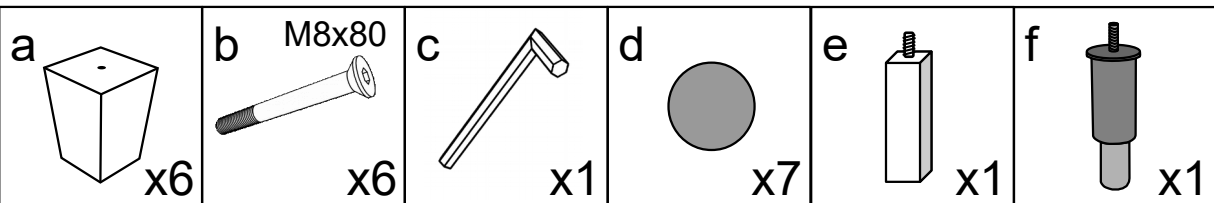
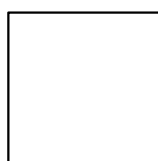
PALMERA

Typ · Type · Tip · Тип · Tipo · Típus

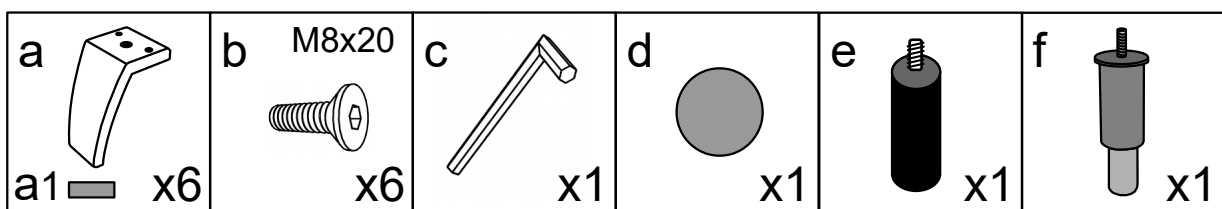
3100-8142; 8141-3300



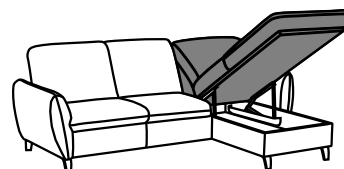
v1



v2

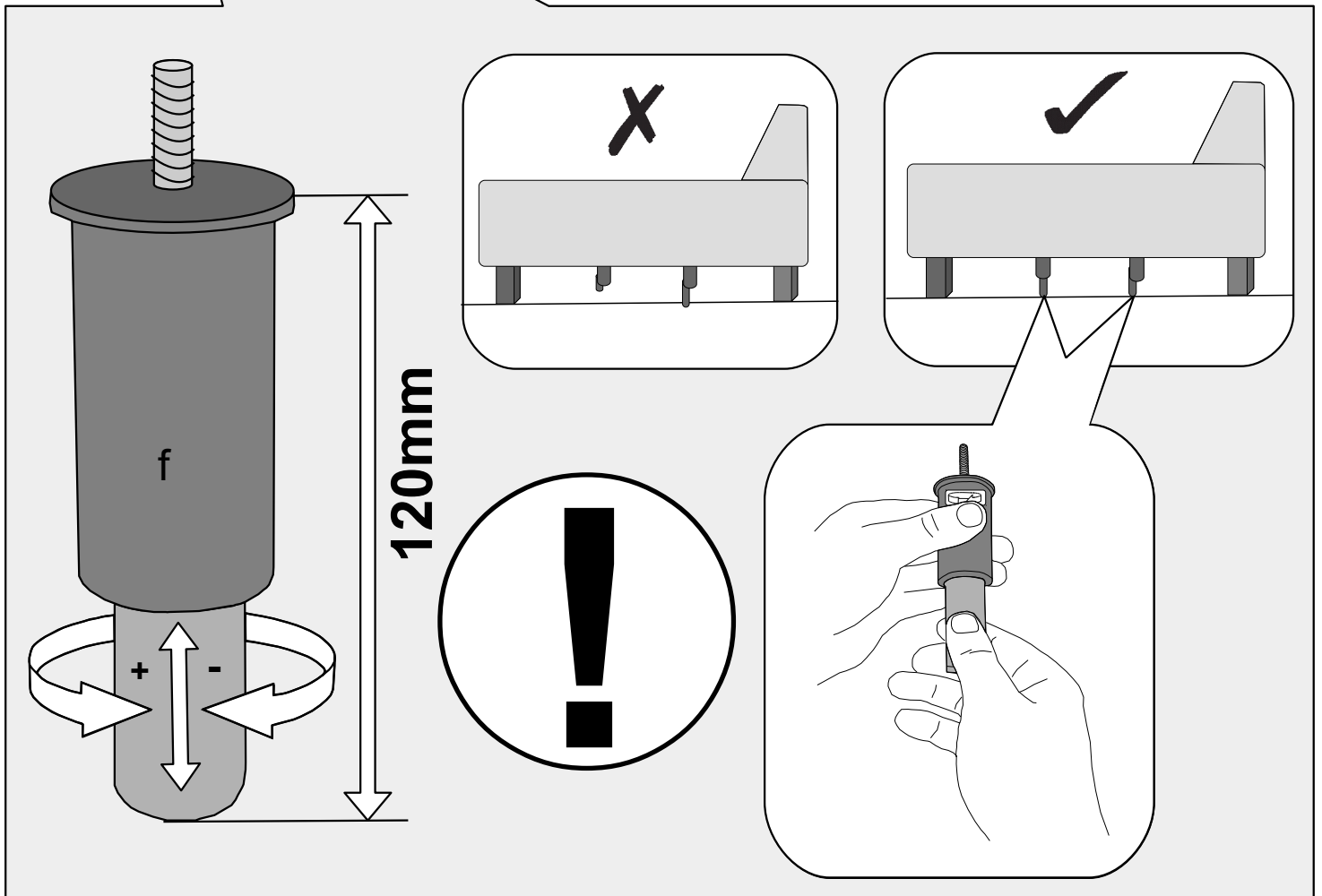
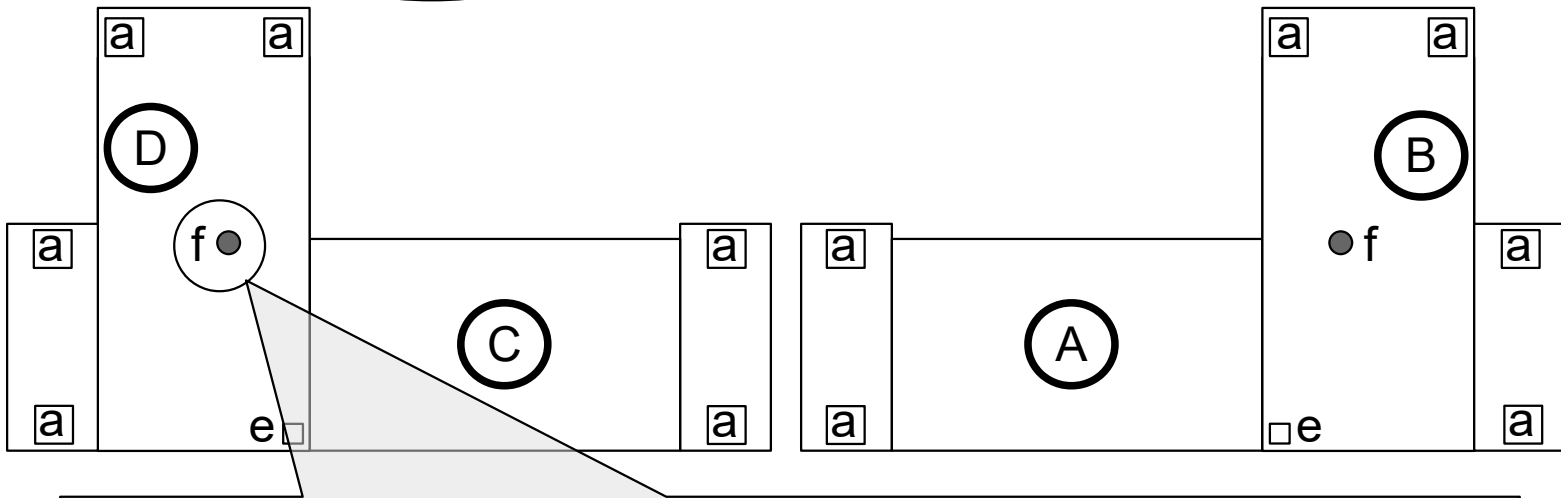
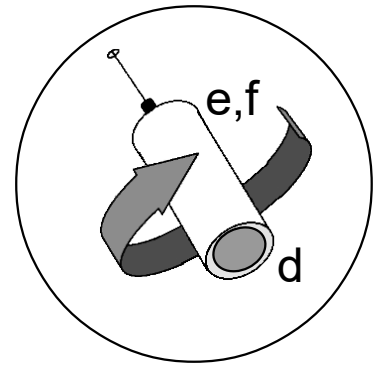
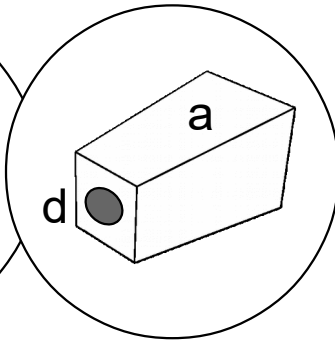
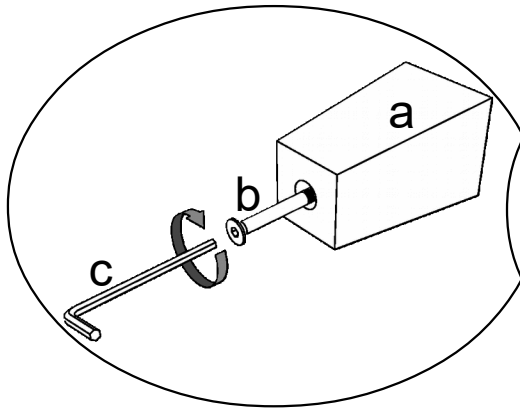
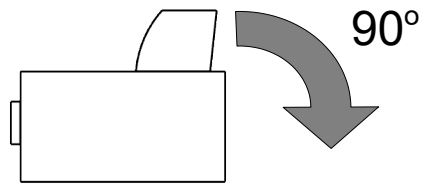


3 0019

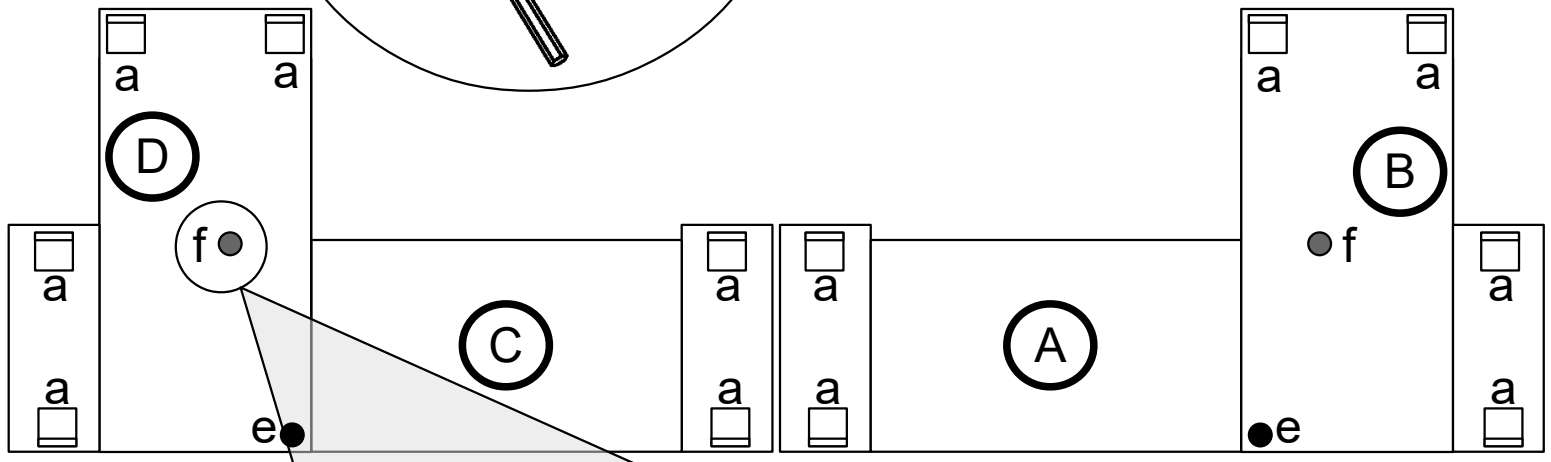
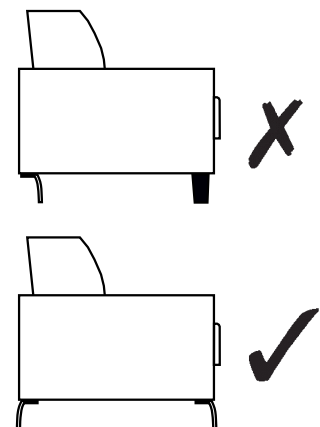
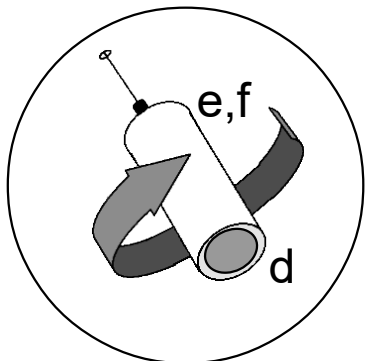
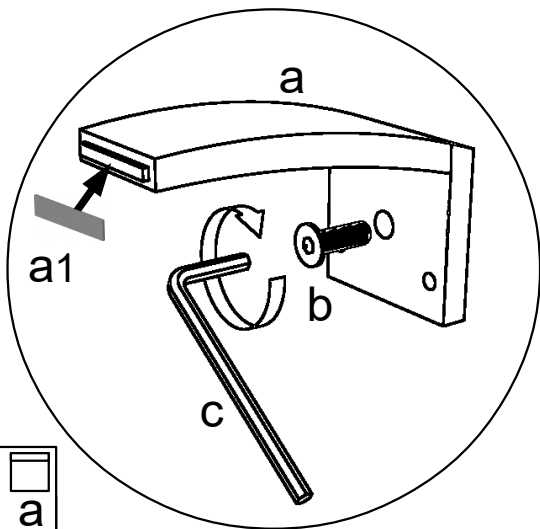
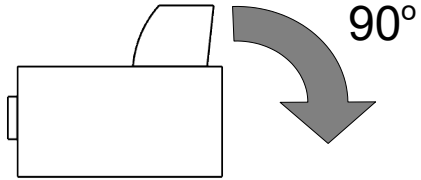


4 0089

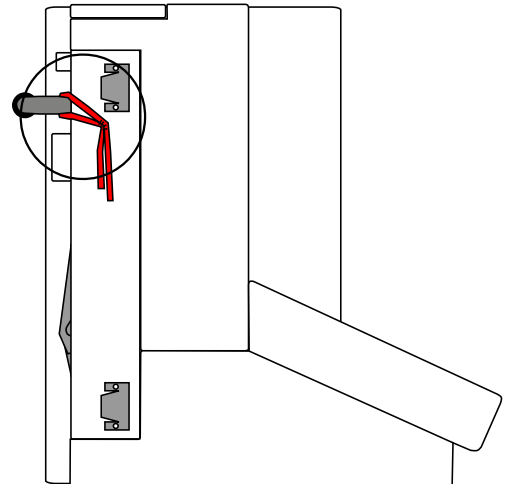
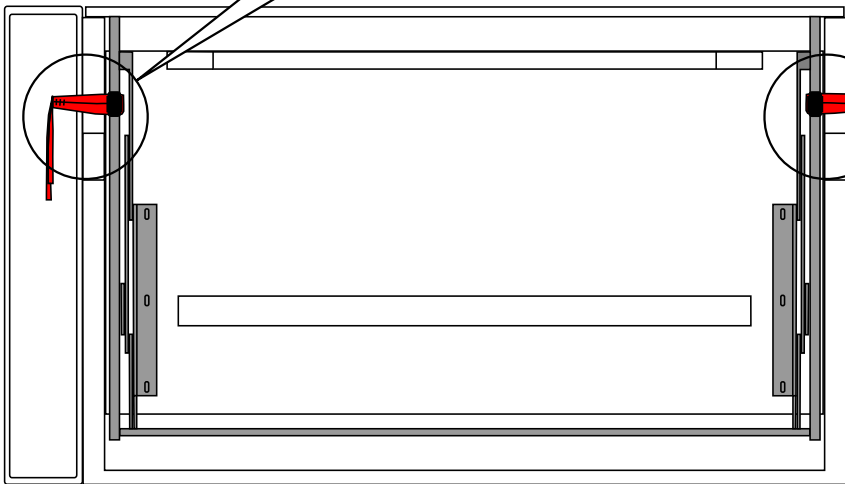
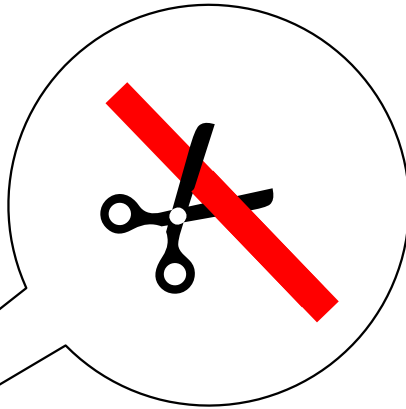
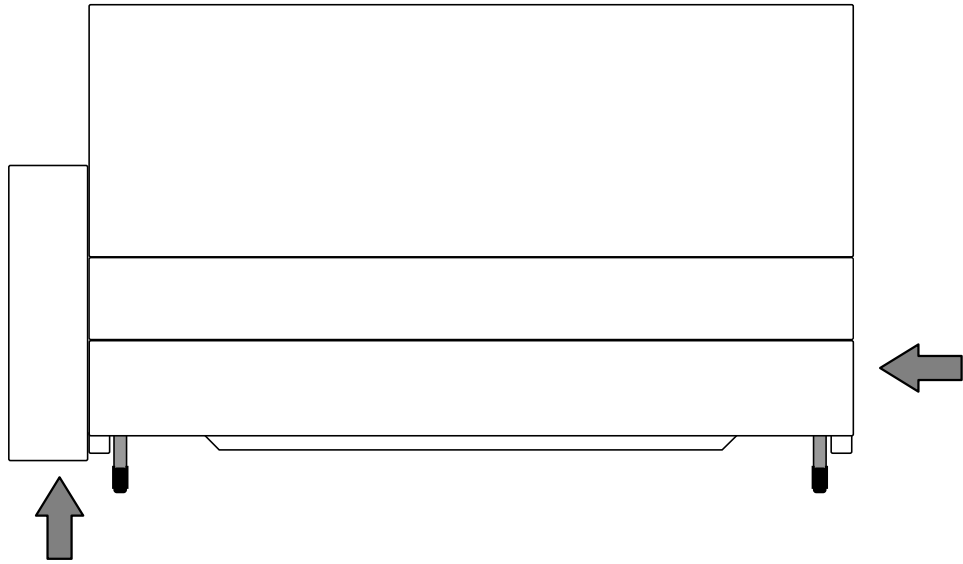
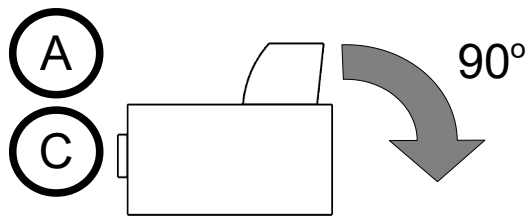
v1

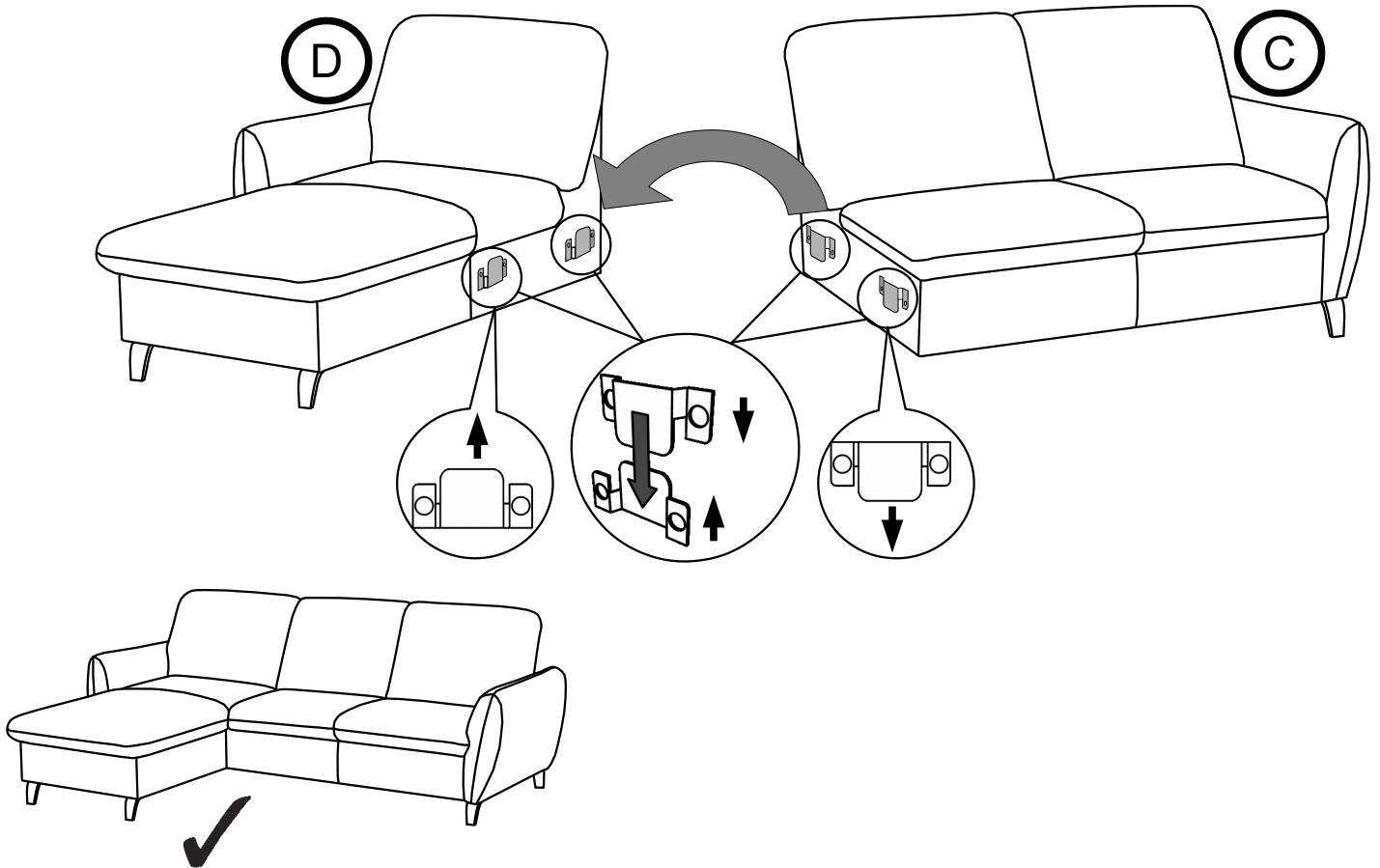
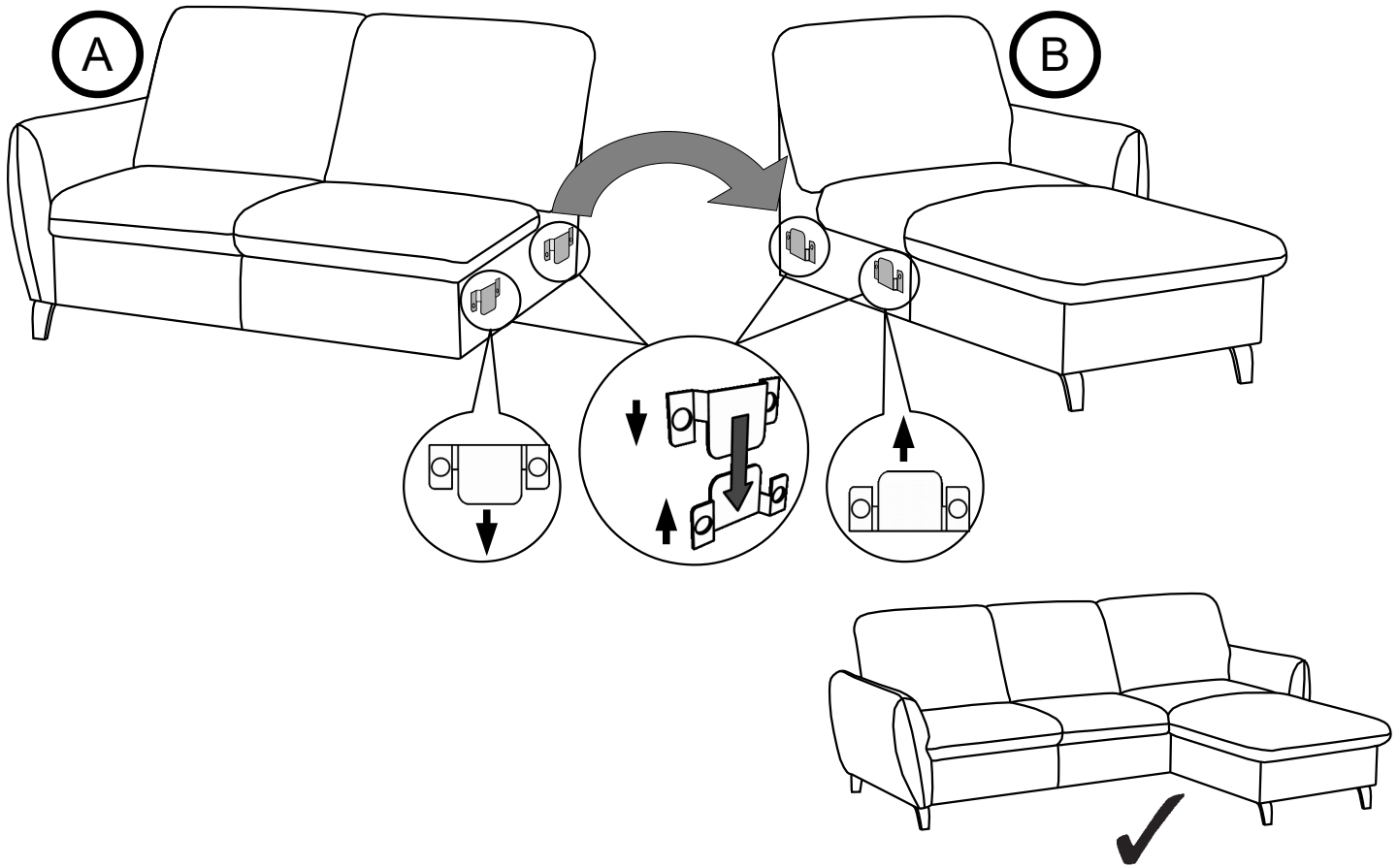
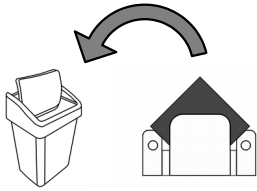


v2



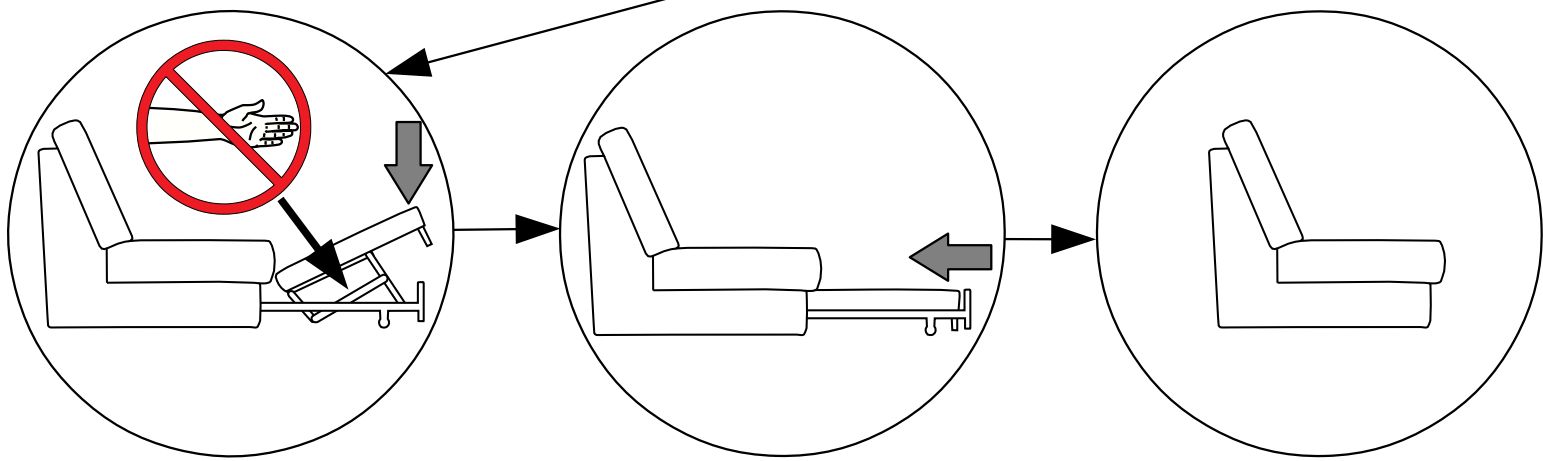
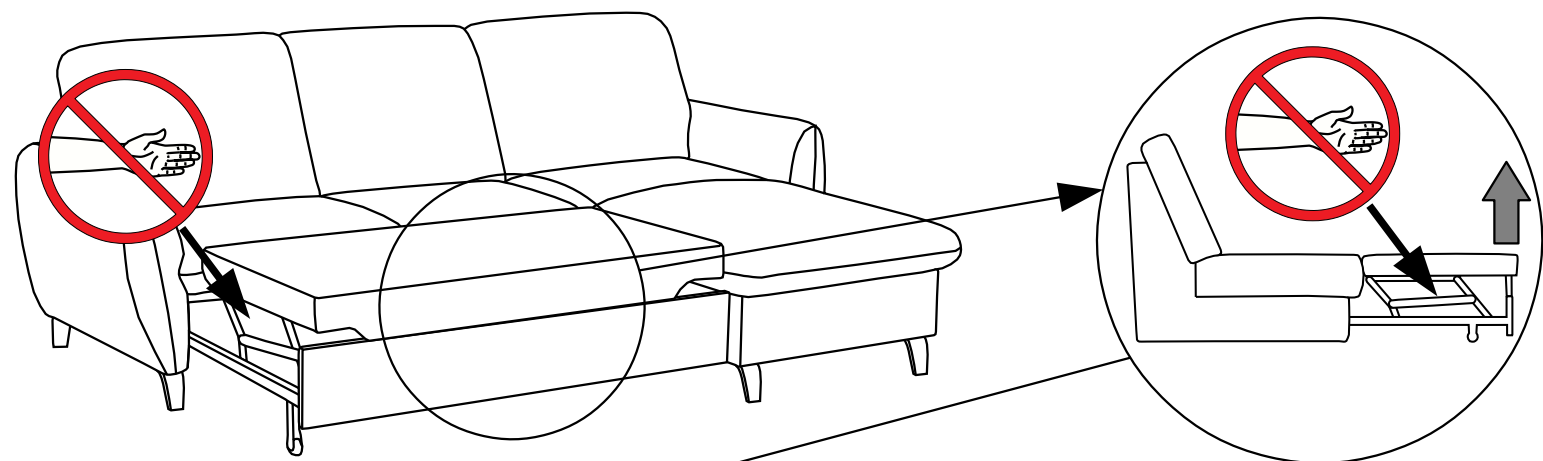
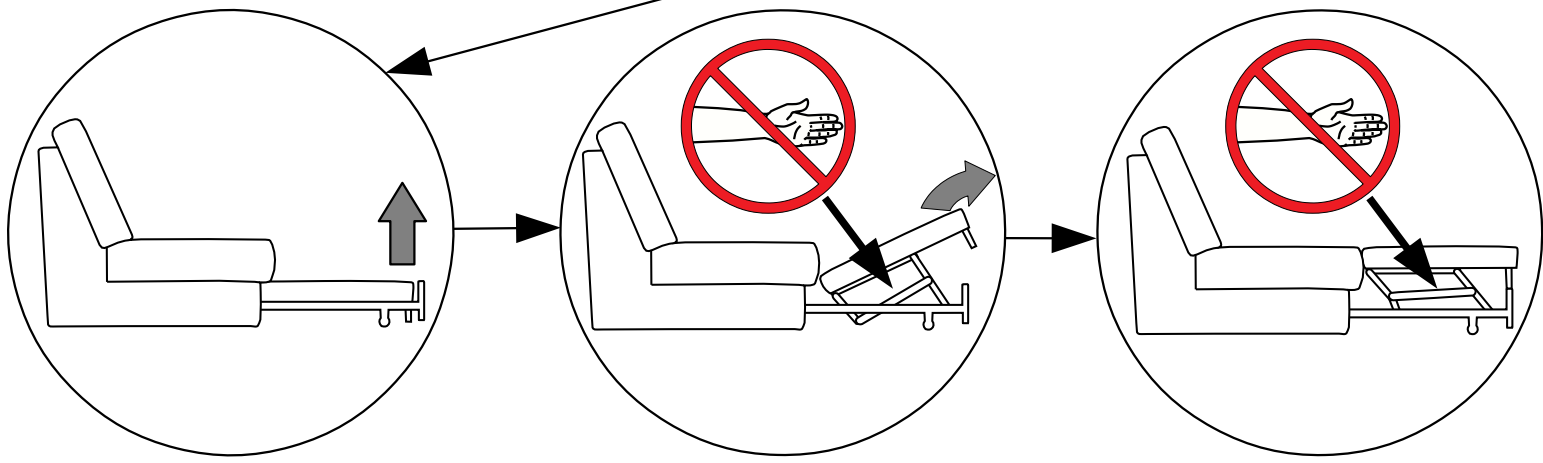
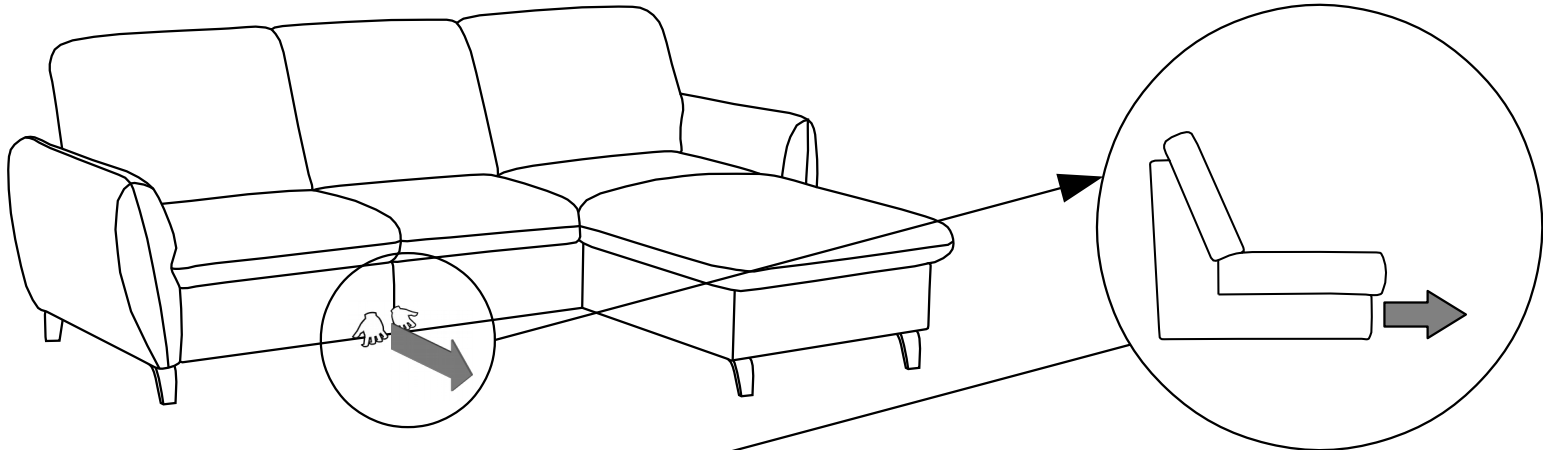
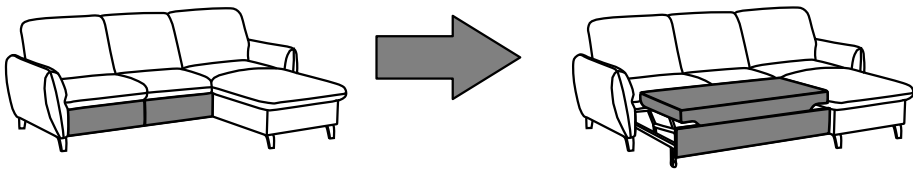
A large assembly diagram showing a cylindrical component labeled 'f' with a height of 120mm. The top of the cylinder has a threaded rod. Below the cylinder, there are two circular callouts: one with a checkmark and one with an 'X'. A large exclamation mark is shown in a circle. A hand is shown holding a small component with a threaded rod, which is being inserted into the bottom of the cylinder. The diagram also shows a hand holding a small component with a threaded rod, which is being inserted into the bottom of the cylinder.





3

A C



4

(B) (D)

